



# NURSERY NEWSLETTER

WEEK  
BEGINNING  
27.06.22

## APPLE CLASS MRS PAVLOVA, MRS WILLIAMS, MISS JANES

### IMPORTANT NOTICES

#### DATES FOR YOUR DIARY

Please be reminded that as per the school calendar/term dates, the school will be closed next week on the following days:

**Thursday 23rd June - in lieu of Queen's Jubilee bank holiday during half term**

**Friday 24th June - Occasional Day**

**Monday 27th June - INSET day**

#### Spare clothes

Please make sure you provide summer spare clothes for your child.

#### Weather

On a sunny day please provide a named sunny hat for your child.

Nursery team

### THEME OF THE WEEK

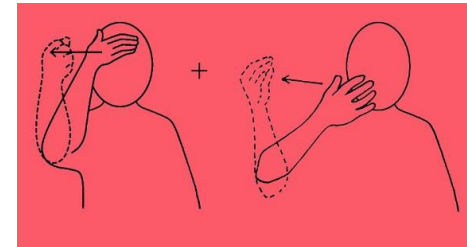
#### Let's tell a story

The children will listen to the story 'Little Red Riding Hood' and will be sequencing the story using pictures. Also the children will learn how to make toast, using a knife to spread the butter and cut each slice in half. We will paint/draw and describe the characters and events in the story.



### SIGN OF THE WEEK

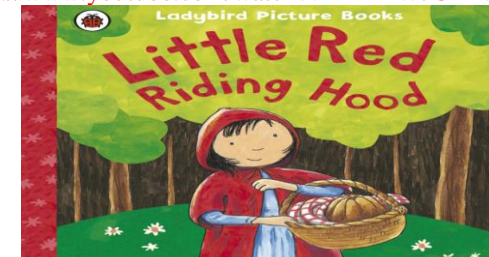
Summer



### BOOK OF THE WEEK

'Little Red Riding Hood

<https://www.youtube.com/watch?v=LDMWJCrDVMI>



### SONG OF THE WEEK

#### Little Red Riding Hood

Red Riding Hood is in the wood,  
EE, I, EE, I, O!

And in the wood she saw a bird,  
EE, I, EE, I, O!

With a tweet, tweet here, and tweet, tweet there,

Here a tweet, there a tweet, everywhere a tweet, tweet!

Red Riding Hood is in the wood,  
EE, I, EE, I, O!

### SOUND OF THE WEEK

This week children will practice all sounds that we have learnt so far- m, a, s, t, d, i, n, p, o, c, k, u, b, g, f, e, l, h, r, j, v.

Also we will read and write simple CVC words e.g. mat, jam, hat, dog.

### THINGS TO DO AND SEE AT HOME AND ON THE WAY TO SCHOOL

- What is your favourite breakfast?
- Encourage your child to use cutlery independently.
- Try and walk or run the daily mile at home.
- Continue to read to your child.
- Practice writing the sounds that we have learnt so far and challenge your child to write the sounds that can hear in simple CVC words.