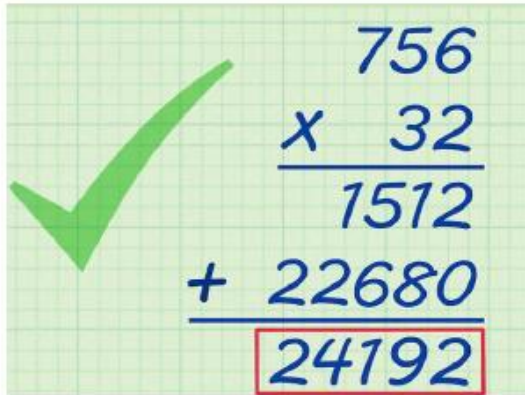


# Year 4 Multiplication Tables Check Workshop

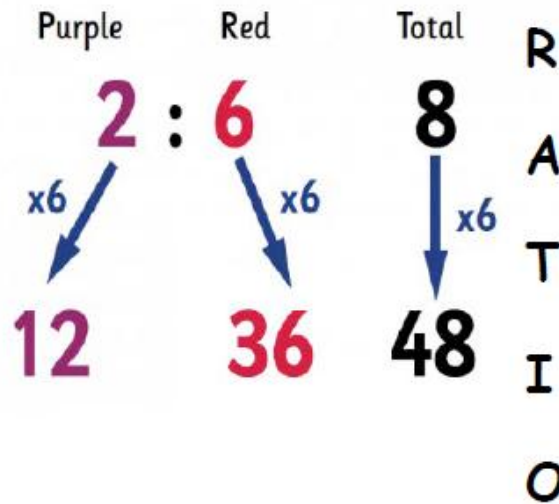
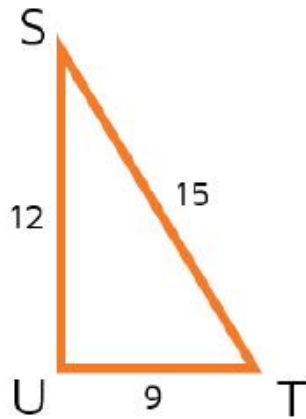
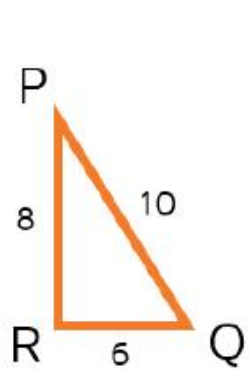
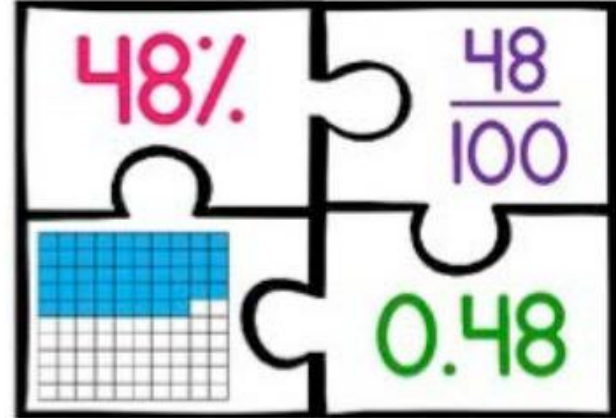
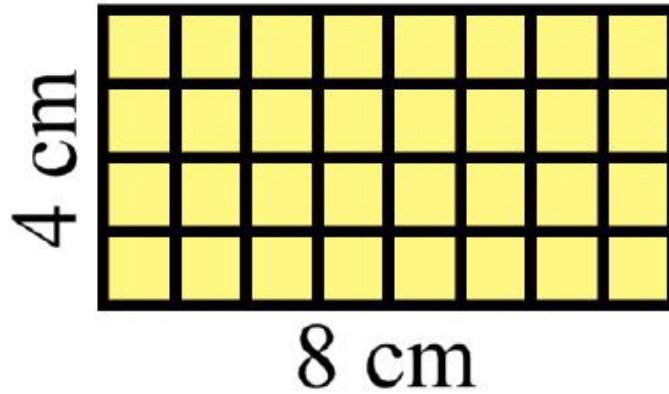


Be kind, work hard and love learning, so we are confident individuals, successful learners and responsible citizens

## Why is multiplication important?



$$\begin{array}{r}
 756 \\
 \times 32 \\
 \hline
 1512 \\
 + 22680 \\
 \hline
 \boxed{24192}
 \end{array}$$



## Times Tables in Year 4

In year 4, we would expect all children to be **secure and fluent** in their times tables up to  $12 \times 12$ .

This includes both multiplication and division facts.

E.g. If children can solve  $4 \times 5 = 20$ , they can also solve:

$$5 \times 4 = 20 \quad 20 \div 4 = 5 \quad 20 \div 5 = 4 \quad 4 = 20 \div 5 \quad 5 = 20 \div 4$$

They can also use this fact to derive related facts:

$$50 \times 4 = 200 \quad 5 \times 40 = 200 \quad 200 \div 5 = 40 \quad 200 \div 4 = 50 \quad 40 = 200 \div 5$$
$$50 = 200 \div 4$$

## Associated facts

$$7 \times 8 = 56$$

- What associated facts do you know?

Links between 2,4,8

Links between 3,6,9

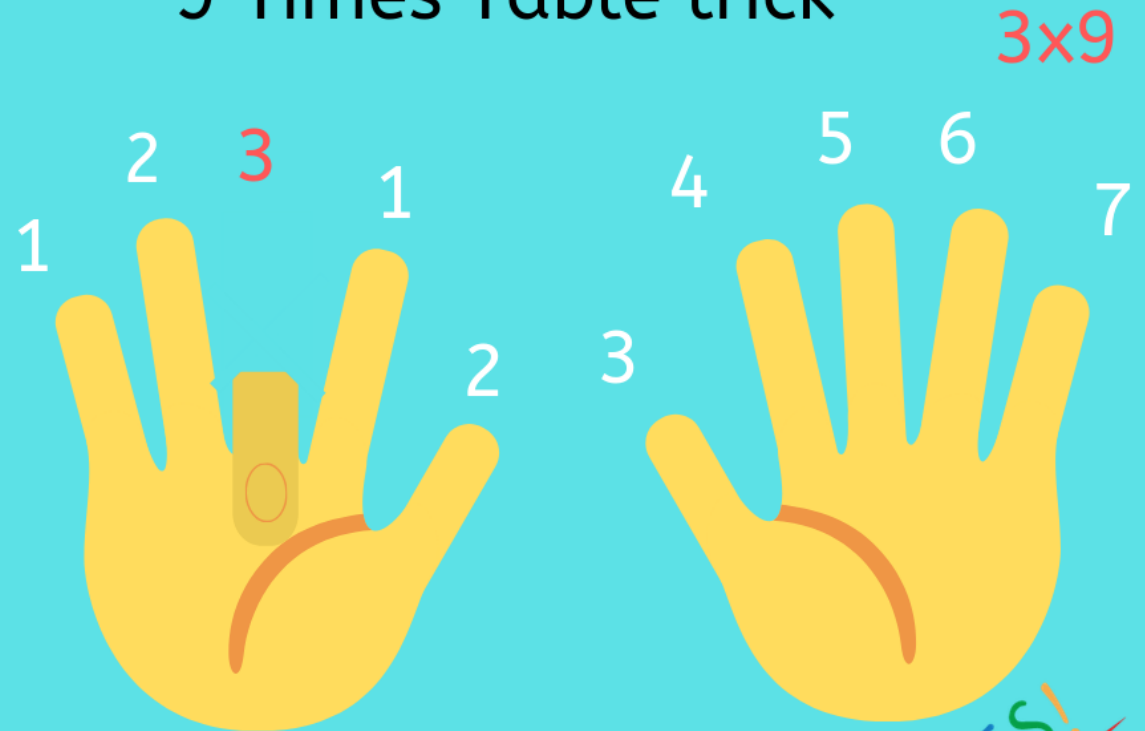
07	14	21
28	35	42
49	56	63

- What do you notice when you multiply an even number by 6?

- $6 \times 2 = 12$
- $6 \times 4 = 24$
- $6 \times 6 = 36$
- $6 \times 8 = 48$
- $6 \times 10 = 60$
- $6 \times 12 = 72$

## Pattern spotting

## 9 Times Table trick



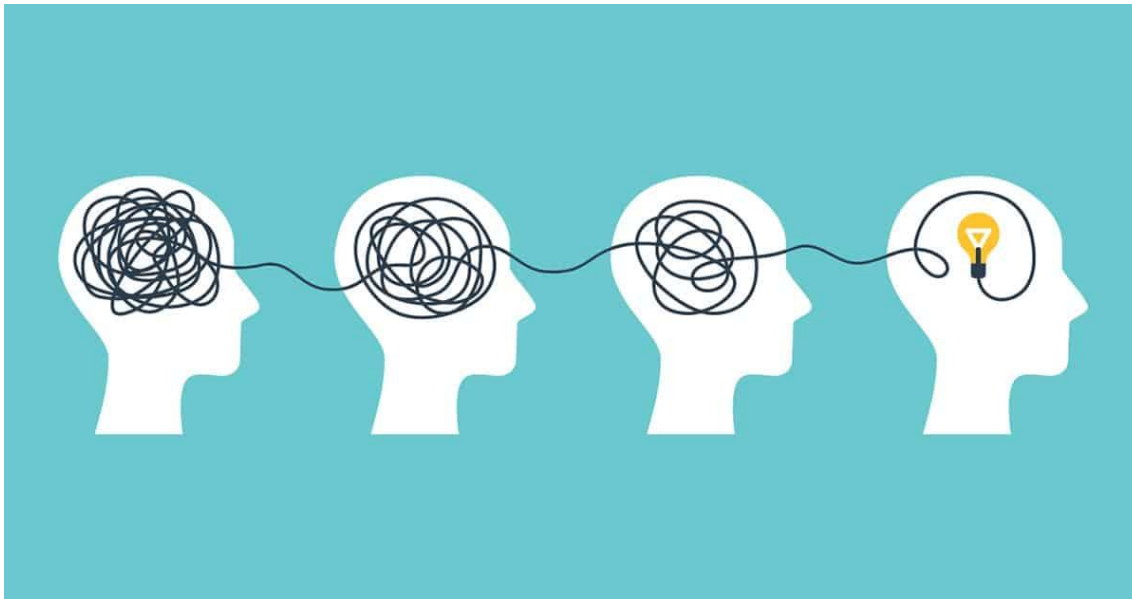
1. Hold your hands out as shown
2. Put down the finger you are multiplying by (3)
3. Count the fingers on either side (2 and 7)
4. You have the answer! (27)



## Weekly testing in school

Children will be tested weekly on their times tables. We expect to see an improvement week on week.

Learning times tables reduces cognitive load in maths.



$$\begin{array}{r} 734 \\ \times 74 \\ \hline \end{array}$$

# Maths Mastery

Cal: How can you use  $10 \times 10$  to help you find  $10 \times 11$ ?

Fin: I can see 100 and 10. That's 110!

Activate Windows

Fin: These are the facts I find tricky.

$10 \times 10$	$11 \times 10$	$12 \times 10$
$10 \times 11$	$11 \times 11$	$12 \times 11$
$10 \times 12$	$11 \times 12$	$12 \times 12$

Mo: Let's use what we know to help. Remember you only need to know one of them!

- 8.45-9am every day
- Study shows this supports children in learning their facts
- Fits in with the sequence of our maths lessons
- Supports learning in Year 5 and Year 6



**NCETM**  
Activate Windows  
NATIONAL CENTRE FOR EXCELLENCE  
IN THE TEACHING OF MATHEMATICS

## Helping at home

- TT Rockstars
- Purple Mash
- Mathletics
- Completing homework
- <https://www.topmarks.co.uk/maths-games/hit-the-button>
- <https://www.topmarks.co.uk/maths-games/daily10>
- <http://www.timestables.me.uk/printable-pdf-quiz-generator.htm>

← Home/Mathematics/Times Tables



[https://www.purplemash.com/#app/games/timestables\\_assessment](https://www.purplemash.com/#app/games/timestables_assessment)



## Tricky Facts

- Pupils will often struggle on a few facts.
- You can use TT Rockstars to help spot the facts they are regularly getting wrong.
- Display these facts around the house (fridge, bedroom, living room).
- Revise that fact as regularly as possible over the period of a few weeks.
- Intensive focus on one fact will help it stick in their memories. E.g. ask on the way to and from school, before dinner, after brushing teeth, waiting to cross the road etc.
- When they get more confident revisit it less regularly but don't forget about it.
- You can also help them create a rhyme or saying to help them remember it.

Look at 1x, 2x, 5x and 10x first.

Then 2x, 4x and 8x.

Then 3x, 6x, 9x.

Finally, 7x and 12x.

## General Information

- The multiplication tables check (MTC) is statutory for all year 4 pupils.
- The purpose of the MTC is to determine whether pupils can recall their times tables fluently, which is essential for future success in mathematics. It will help schools to identify pupils who have not yet mastered their times tables, so that additional support can be provided.
- The MTC will take place in June.
- The check consists of 25 questions. Pupils will have 6 seconds to answer each question, with a 3-second pause between questions.
- Your child's teacher will share your child's score with you, as they would with all national curriculum assessments. Higher scores in the check indicate greater proficiency in fluently recalling multiplication tables. Any child who does not achieve full marks in the MTC will receive further additional support plug any gaps in their times table knowledge in Years 5 and 6.



Remaining time: 5

$$11 \times 2 = \square$$

1	2	3
4	5	6
7	8	9
<	0	Enter

## What does it look like?

- <https://www.timestables.co.uk/multiplication-tables-check/>
- o 6,7,8,9 and 12 more frequent
- o 2,5,10 least frequent
- o No 1x table facts



